

NOTES: UNLESS OTHERWISE SPECIFIED

1. INTERPRET DRAWING PER SAES PROCEDURE P250-010.
2. MC1500, MC2550 AND MC3000 FITTINGS: 1/2" FVCR.
3. MC4500 AND MC9000 FITTINGS: 1" MVCR.
4. DUAL MANIFOLDS ARE DESIGNED FOR USE WITH VALVED PURIFIERS.

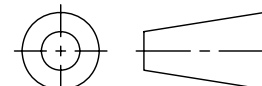
MODEL	DIM 'A' (INLET)	DIM 'B' (OUTLET)	DIM 'C'	DIM 'D'	DIM 'E'	DIM 'F'
MC1500-D	4.9 [124]	2.8 [71]	10.0 [254]	41.2 [1046] LENGTH	20.0 [508] WIDTH	7.1 [180] DEPTH
MC2550-D	5.4 [137]	3.3 [84]	10.0 [254]	41.2 [1046] LENGTH	20.0 [508] WIDTH	7.6 [193] DEPTH
MC3000-D	5.4 [137]	3.3 [84]	10.0 [254]	41.2 [1046] LENGTH	20.0 [508] WIDTH	7.6 [193] DEPTH
MC4500-D	8.5 [216]	4.3 [109]	15.0 [381]	54.4 [1382] LENGTH	30.0 [762] WIDTH	11.0 [279] DEPTH
MC9000-D	8.5 [216]	4.3 [109]	15.0 [381]	66.3 [1684] LENGTH	30.0 [762] WIDTH	11.0 [279] DEPTH

UNLESS OTHERWISE SPECIFIED, DIMENSIONS ARE IN INCHES [mm] AND TOLERANCES ARE: ALL FEATURES

<b>FRACTIONS</b>	<b>DECIMALS</b>	<b>BREAK SHARP EDGES</b>	<b>ANGLES</b>
± 1/32"	.X ±.1 [2.5]	.003 [0.076] TO .007 [0.178]	±1°
± [0.7874]	.XX ±.03 [0.76]	<b>MACHINED SURFACES</b>	
	.XXX ±.010 [0.254]	125 RMS	

DO NOT SCALE DRAWING

THIRD ANGLE PROJECTION

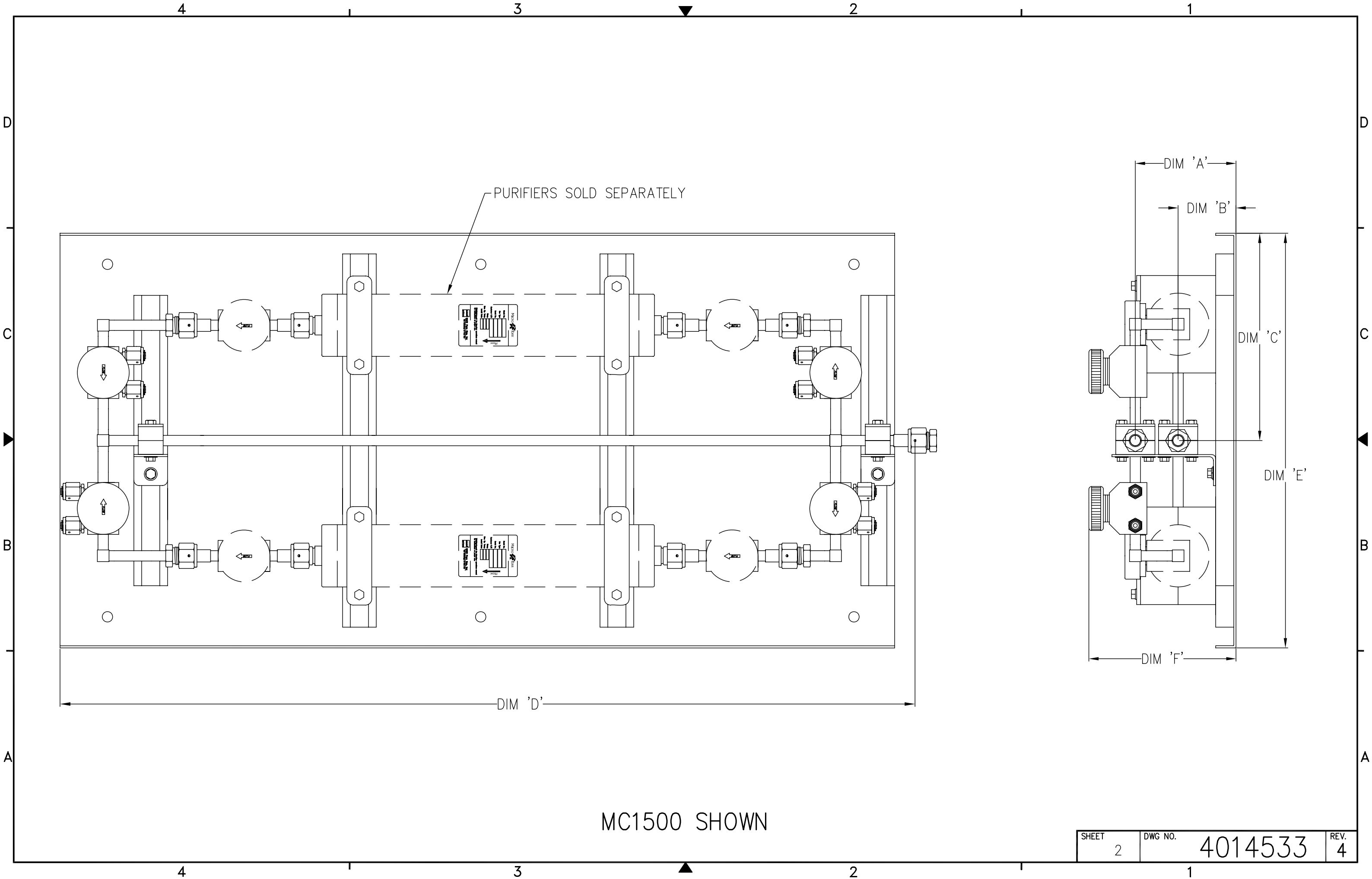


MATERIAL	APPROVALS	DATE
FINISH	DRAWN	J. BEATTIE 06-10-10
TREATMENT	CHECK	J. BEATTIE 06-10-10
	ENG	P. MENIGOZ 06-10-10

SAES Pure Gas, Inc. 4175 SANTA FE ROAD  
SAN LUIS OBISPO, CA 93401 (805) 541-9299

TITLE: ENVELOPE DRAWING, DUAL MANIFOLD, 1/2"

SIZE	CAGE CODE	DWG NO.	REV.
B	AC913	4014533	4
SCALE	ECR/ECN NO.	SEE ECR 10426	SHEET 1 OF 2
N/A			



PURIFIERS SOLD SEPARATELY

DIM 'D'

DIM 'A'

DIM 'B'

DIM 'C'

DIM 'E'

DIM 'F'

MC1500 SHOWN

SHEET	DWG NO.	REV.
2	4014533	4